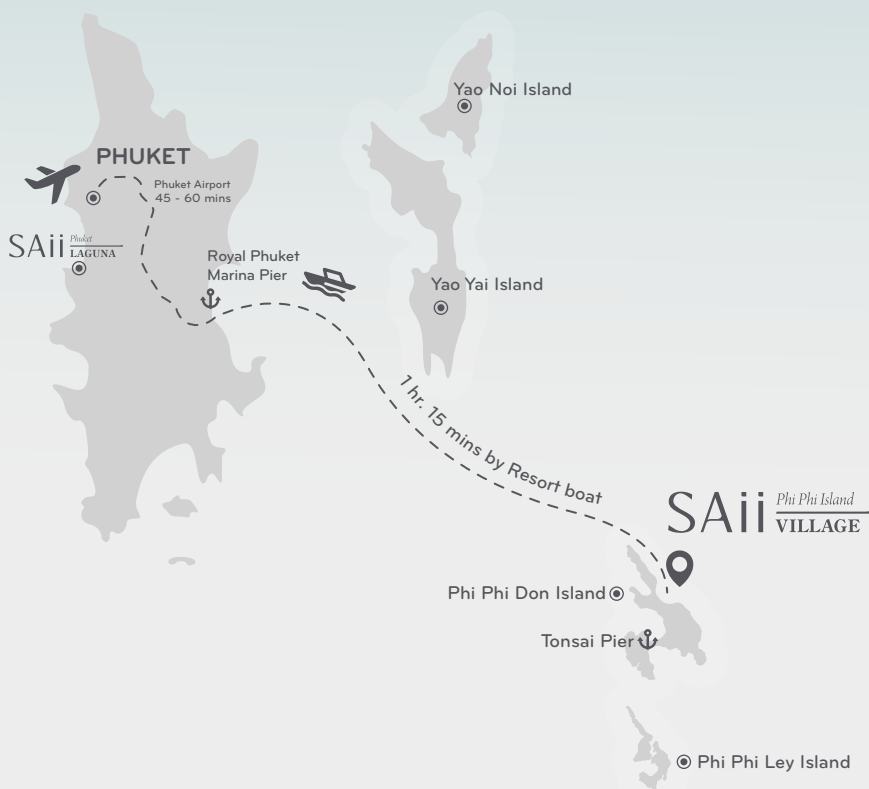




## GETTING TO & FROM ISLAND PARADISE

SAii Phi Phi Island Village ensures a sophisticated, intimate and organically blissful getaway experience that includes smooth arrival and departure services.

Your exclusive tropical haven awaits.



### Phuket to Resort

Departure Time	Arrival Time
13:00	14:15
16:00	17:15

### Resort to Phuket

Departure Time	Arrival Time
8:00	9:15
12:00	13:15

### TERMS & CONDITIONS

- Cancellations made less than 12 hours before scheduled speedboat transfers and no-shows will be subject to a full charge.
- Domestic arrival flights must land at Phuket International Airport at least 2 hours before speedboat departure time. International flights must land at least 3 hours before boat departure time.
- In order to reach Phuket International Airport in time for your departure flight, we recommend departing Phi Phi by speedboat at least 3 and a half hours before domestic flights and at least 4 and a half hours before international flights.
- The speedboat transfer to SAii Phi Phi can be rough due to high waves. If you're pregnant, we recommend taking the ferry for a more steady journey.
- For guests who suffer with back pain, we recommend the ferry to avoid exacerbating any discomfort.
- Speedboat transfers are not suitable for those who have difficulty walking.
- The speedboat transfer schedule excludes transfers by car from/to Phuket airport (approx 1 hour).
- All rates are in Thai baht and subject to 10% service charge and applicable 7% government tax.
- Above boat schedule and period of operation may be changed without notice.

Scan for more information



Should you require any further information or to confirm your travel arrangements, please contact: +66 (0) 75 628 900  
rsvn.phiphi@SAiiresorts.com

Facebook: SAiihiphiislandvillage

Instagram: @phiphivillage